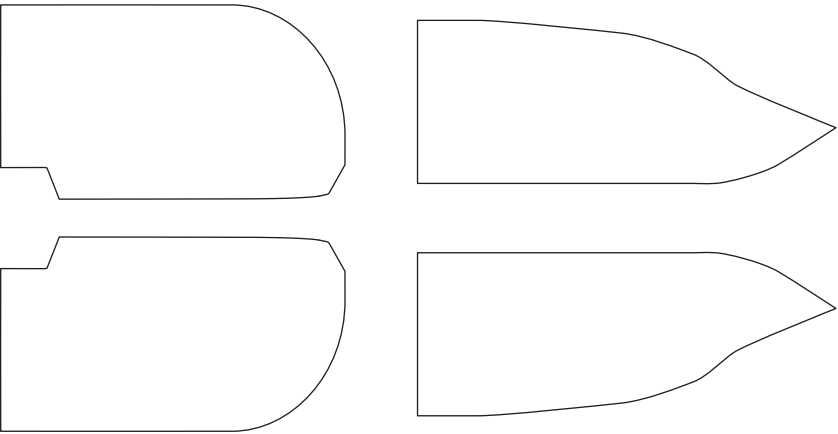


Kevlar Templates



WARNING

Templates might not be 100% accurate or could be bigger then necessary. Make test samples before using real Carbon or Kevlar decals to check overall coverage and avoid wasting precious materials. Personally i used masking sheets first and then cutted the Extra fine Carbon Pattern Decal from Tamiya. Also remember that you might need to mirror the shapes depending on how you cut them.

Carbon Templates

